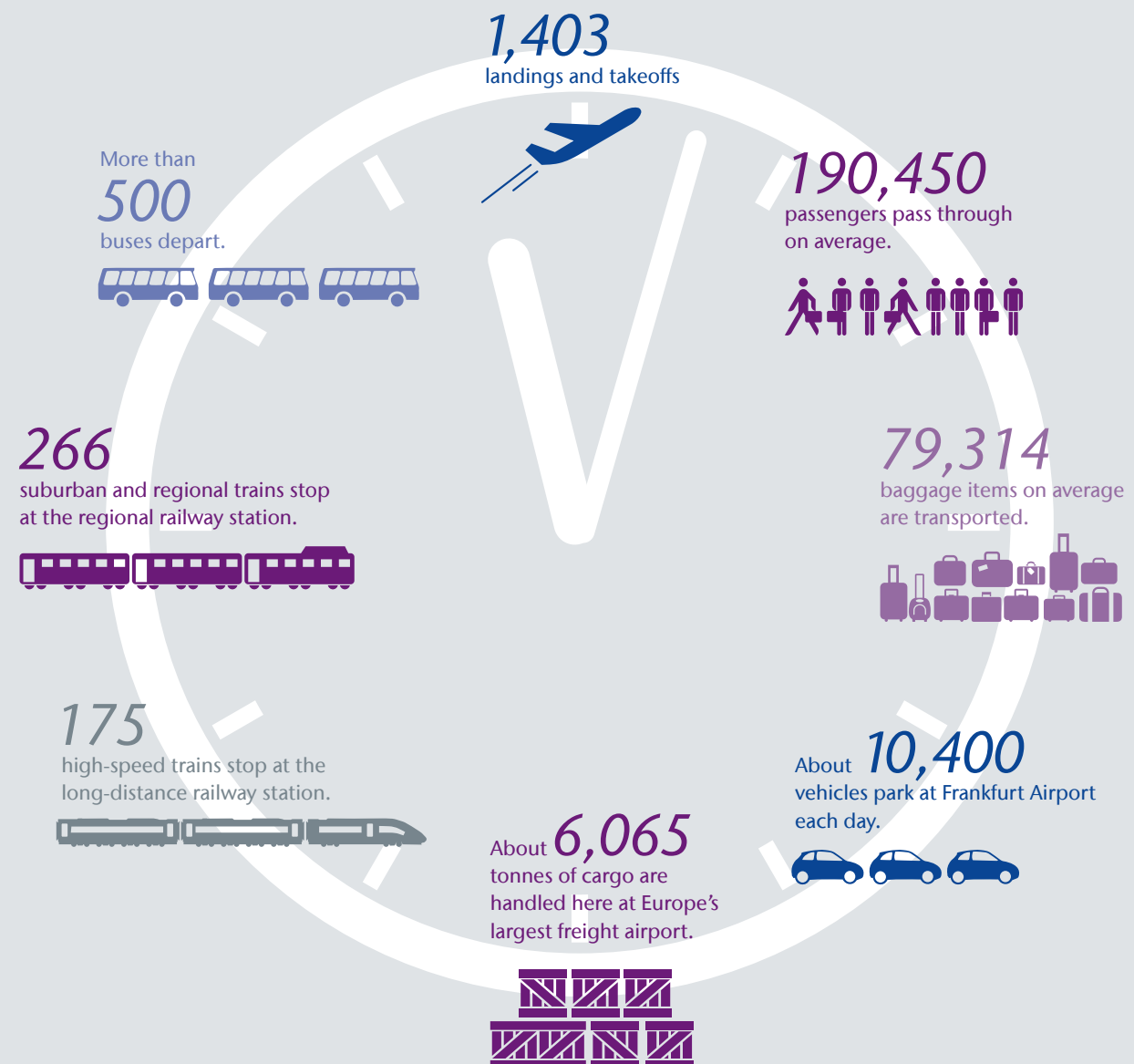


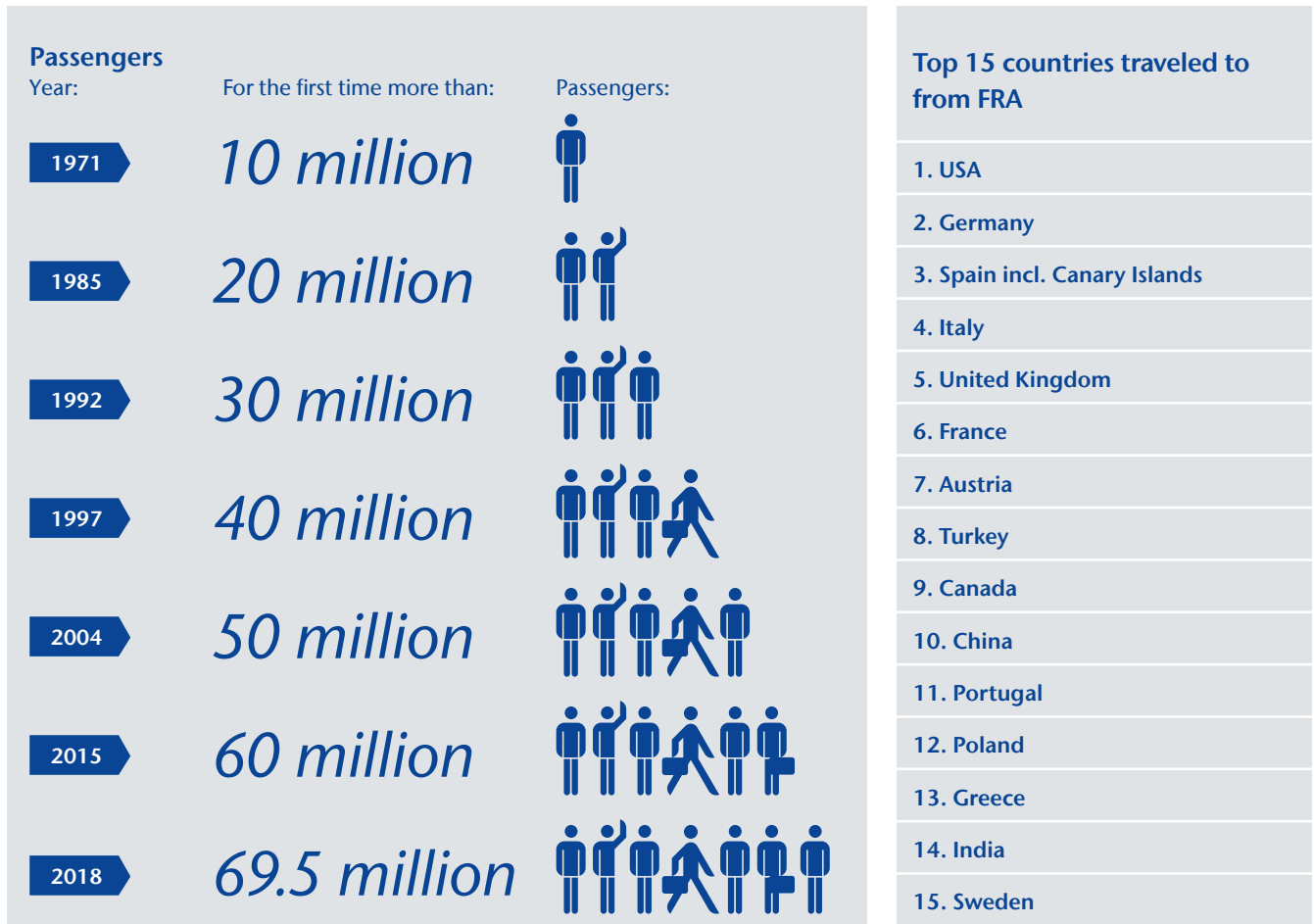
2018 Facts and Figures on Frankfurt Airport

24 Hours at FRA

All of this happens at Frankfurt Airport during the course of a day:

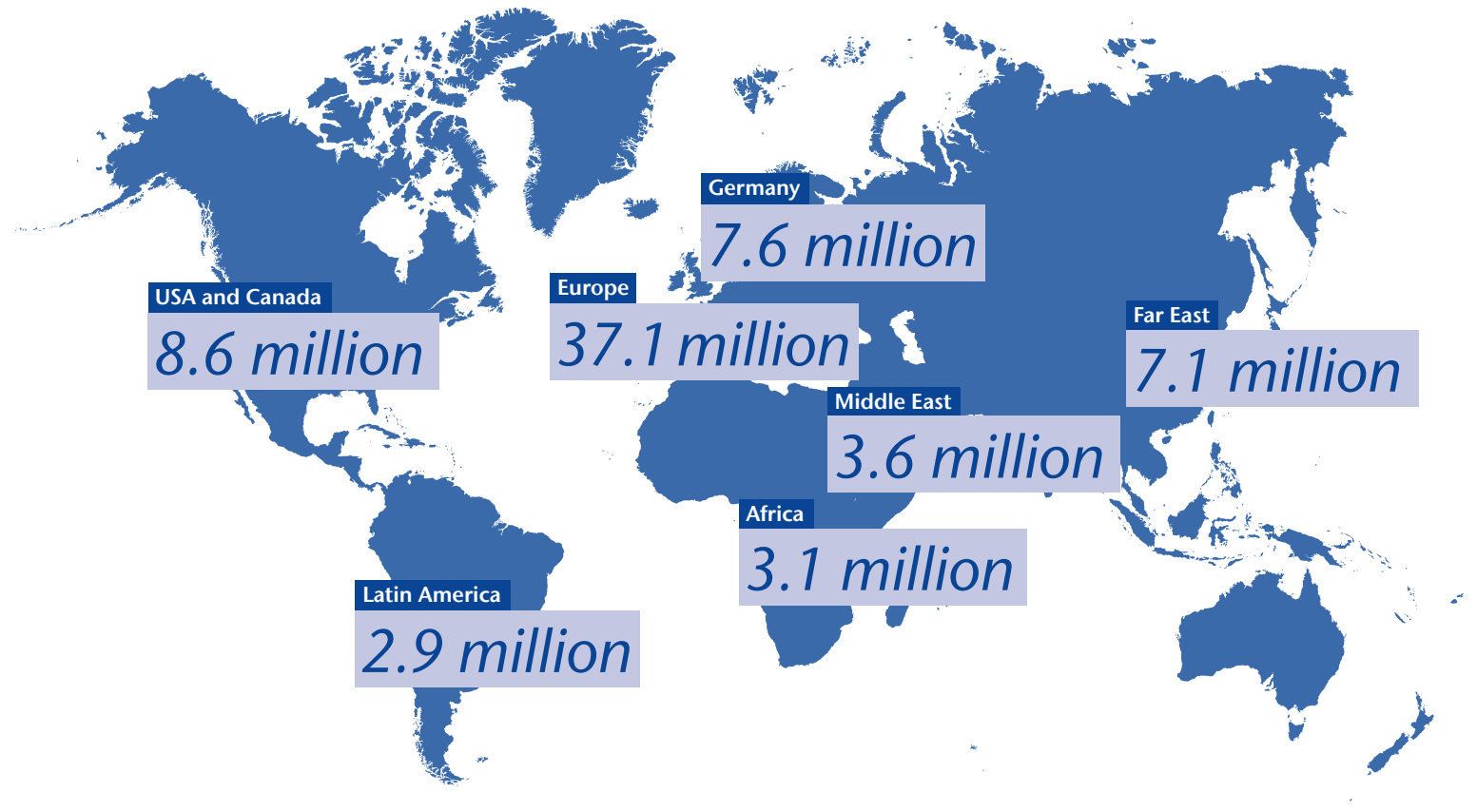


Traffic Figures



Passengers by regions

Arriving and departing passengers



Traffic Figures

512,115
aircraft movements



94
airlines



Employees

81,000
at Frankfurt Airport



more than
450
companies,
government
agencies etc.



22,706
employees of the
Fraport Group at FRA

This & That

5,000
airport tours in 2018



Various tours for individuals, families and small groups can be booked online at www.airporttours.frankfurt-airport.com/en

3.8 million
vehicles parked at FRA in 2018



More than 3.8 million vehicles were parked at Frankfurt Airport in 2018.

Cargo

About
43
blue whales



In 2018 a total of 2,213,887 tonnes of cargo was handled at Frankfurt Airport. This corresponds to the weight of about 43 blue whales per day.

37%



63.0% of the airfreight is carried by dedicated cargo planes; 37.0% travels as belly freight in passenger aircraft.

Runway System

Northwest Runway (landings only)

- 2,800m long
- 45m wide with two 7.5-meter-wide shoulders

Center Runway

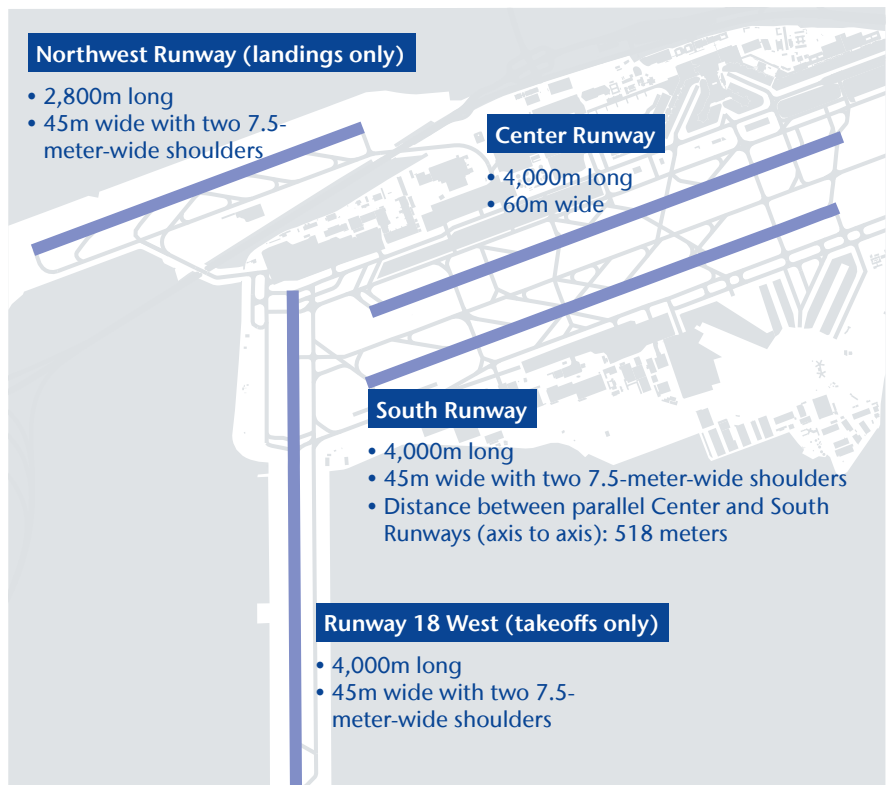
- 4,000m long
- 60m wide

South Runway

- 4,000m long
- 45m wide with two 7.5-meter-wide shoulders
- Distance between parallel Center and South Runways (axis to axis): 518 meters

Runway 18 West (takeoffs only)

- 4,000m long
- 45m wide with two 7.5-meter-wide shoulders



Technology

Automated Baggage Handling System

81km

Total length of conveyors



2.50m

Average speed per second
Maximum speed of 5m per second

28,949,770

baggage items passed through the system in 2018.



20,500

baggage items an hour

595.588

bulky baggage items were conveyed in 2018.



The record for outbound baggage on a single day was 112,566 items on September 29, 2018.

Vehicles & Equipment

21,049

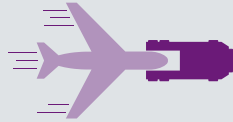
vehicles and pieces of equipment

12,495

trailers, container transporters, boarding stairs etc.



600 tonnes



Two of the world's first electrically powered aircraft tugs are in use at Frankfurt Airport. The "Kalmar TBL-800", operated by Lufthansa Leos, can tow an Airbus A380 with a takeoff weight of up to 600 tonnes.

Fuel Supply

60km



At the airport, an underground network of pipes with a total length of 60 kilometers carries jet fuel to the individual aircraft parking positions.

74

Olympic-size swimming pools



The fuel farm has 10 above-ground tanks with a total capacity of 186 million liters of jet fuel. This is enough to fill 74 Olympic-size swimming pools.

Firefighting & Rescue Services

400

fire department and rescue service employees



5

fire and rescue stations



Approx. **12,300**

fire extinguishers

60

firefighting vehicles



3 minutes



The fire department must be able to get to any location on the airfield or apron within three minutes.

5,300 liters



The roof-mounted canons of the large special fire trucks (crash tenders) used at Frankfurt Airport can propel water more than 70 meters at a rate of at least 5,300 liters a minute.

About This Publication

Published by: Fraport AG, Frankfurt Airport Services Worldwide, Corporate Communications (UKM)

D-60547 Frankfurt am Main

Editor: Alexander Körner (UKM-PS) /

FAZIT Communication GmbH

Design: Martin Gorka

Production: Andreas Plutta (UKM-IK)

Printing: Airport Print Center

Content finalized in April 2019